

1. Jack

Electric Bass

M. Nauen

① **Vivo** $\text{♩} = 92$

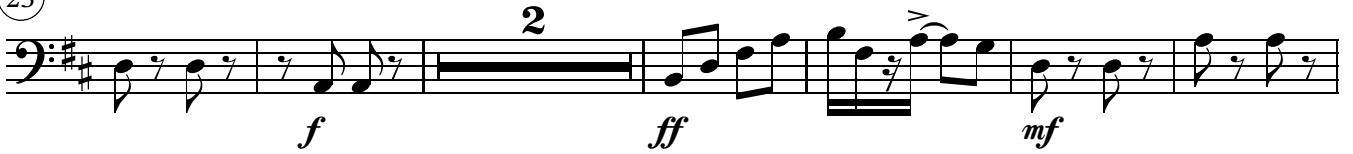
8



⑮



⑳



㉑



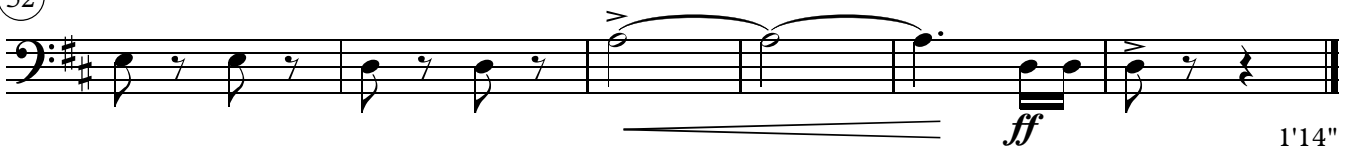
㉔



㉖



㉙



1'14"

Electric Bass

No 2. "Mary"

---tacet---

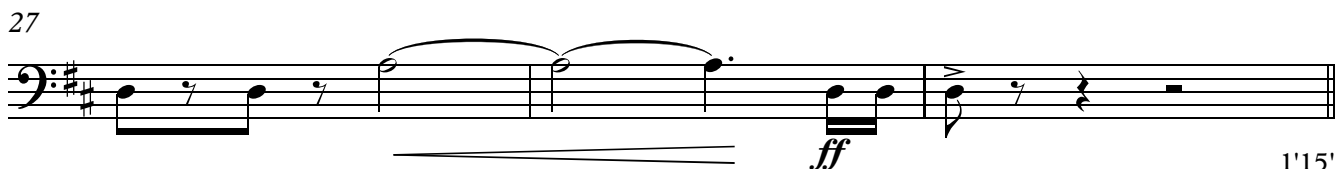
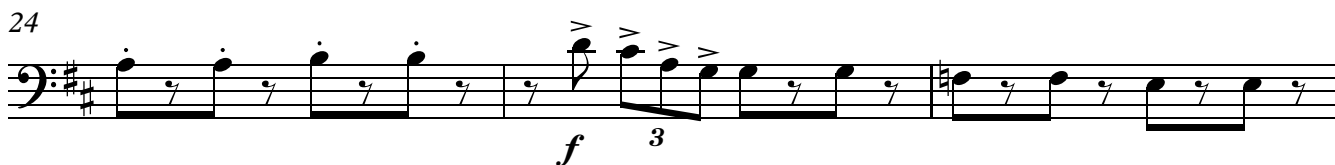
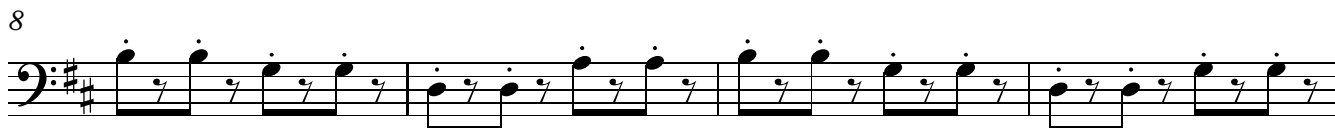
No 3. "Prince Metronome"

---tacet---

Electric Bass

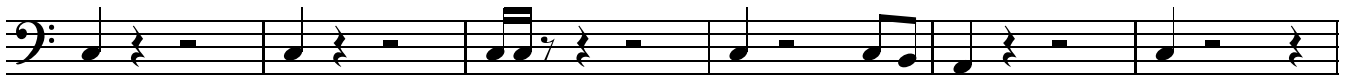
4. Jack and Mary on the way to Kingdom of Music

Allegretto ♩=92
4

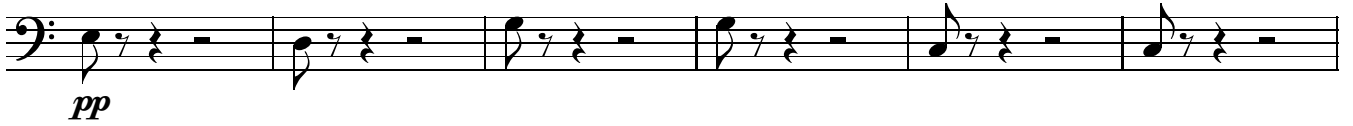


5. Kingdom of Music is down

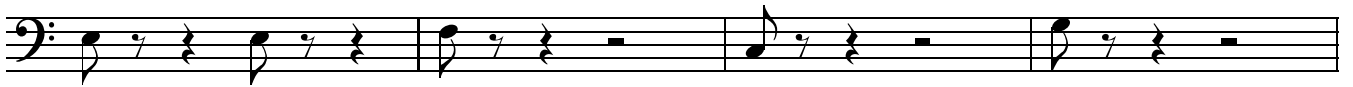
① **Andante** ♩=62



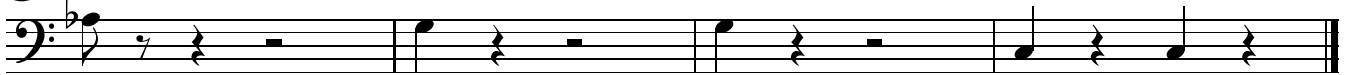
⑦



⑬



⑰



6. Spy Mistake

① **Presto** ♩=140

⑨

⑱

⑳

㉔

Maestoso ♩=96

㉔

Tempo primo

㉔

Moderato ♩=90

㉔

Tempo primo

㉔

Electric Bass

7. At The Castle of Herzog Cacophone

① **Allegro** ♩=120

pp

⑤

⑨

⑬

ff *f* *p*

⑱

sfz sfz sfz

⑳

f f f f

37 **Meno mosso**

spp

42

pp

48

54 **rit. . . . Tempo primo**

sf

59

63

sfz sfz sfz fff

Electric Bass

No 8. "Lullaby"

---tacet---

No 9. "Angry Birds Fuge"

---tacet---

10. Thunder-Bach

AC/DC and J.S.Bach
Arr. Maria Nauen

① Presto ♩=126

ff

⑥

sfz sfz

⑪

sfz sfz

⑱

sfz

⑳

sfz

㉕

sfz

㉙

ff

㉛

ff

㉟

5

(47) **Maestoso** ♩=60 **Allegro** ♩=120

ff **7** *f*

(58)

p

(65)

ff

(70) **Lento** **A tempo** ♩=120

f **3** *mp*

(77)

sfz sfz

(83)

f

(90)

ff

(93)

ff

(96)

ff

(100)

sfz sfz *sfz sfz*

105

Musical notation for measure 105, bass clef. The measure contains a sequence of eighth notes: G2, A2, B2, C3, D3, E3, F3, G3, A3, B3, C4, D4, E4, F4, G4, A4, B4, C5. There are two *sfz* (sforzando) markings with accents over the notes G3 and G4.

110

Musical notation for measure 110, bass clef. The measure contains a sequence of eighth notes: G2, A2, B2, C3, D3, E3, F3, G3, A3, B3, C4, D4, E4, F4, G4, A4, B4, C5. There is one *sfz* (sforzando) marking with an accent over the note G3. The final part of the measure consists of a sixteenth-note triplet: G4, A4, B4.

115

Musical notation for measure 115, bass clef. The measure contains a sequence of sixteenth notes: G2, A2, B2, C3, D3, E3, F3, G3, A3, B3, C4, D4, E4, F4, G4, A4, B4, C5. There are accents over every note.

119

Musical notation for measure 119, bass clef. The measure contains a sequence of sixteenth notes: G2, A2, B2, C3, D3, E3, F3, G3, A3, B3, C4, D4, E4, F4, G4, A4, B4, C5. There are accents over every note.

123

Musical notation for measure 123, bass clef. The measure contains a sequence of sixteenth notes: G2, A2, B2, C3, D3, E3, F3, G3, A3, B3, C4, D4, E4, F4, G4, A4, B4, C5. There are accents over every note. The measure is divided into three sections by bar lines, each containing a *ff* (fortissimo) marking.

129

Musical notation for measure 129, bass clef. The measure contains a sequence of sixteenth notes: G2, A2, B2, C3, D3, E3, F3, G3, A3, B3, C4, D4, E4, F4, G4, A4, B4, C5. There are accents over every note. The measure is divided into two sections by a bar line, each containing a *sfz* (sforzando) marking.

133

Largo

5

Musical notation for measure 133, bass clef. The measure contains a sequence of eighth notes: G2, A2, B2, C3, D3, E3, F3, G3, A3, B3, C4, D4, E4, F4, G4, A4, B4, C5. There is a bar line after the eighth note G3. Above the bar line is a '5' indicating a five-measure rest. The measure ends with a *fff* (fortississimo) marking and an accent over the final note G4.

140 **Tempo primo**

Musical notation for measure 140, bass clef. The measure contains two eighth notes: G2, A2. There are two *sfz* (sforzando) markings with accents over the notes G2 and A2.

Electric Bass

No 11. "Wishes come true"

---tacet---

No 12. "Little Notes Choir"

---tacet---

No.13 "Cacophone's Army"

---tacet---

Electric Bass

14. Battle for Harmony

① **Presto** ♩ = 152

f

⑥

⑪

⑯

ff

⑳

sfz sfz sfz

㉑

sfz sfz *ff*

㉗

㉒

ff *spp*

㉘

sfz sfz sfz sfz

51

ff

56

64

71

77

84

90

sfz sfz sfz

97

sfz ff

106

fff

114

123

131

138 at the frog

f

144

149

154

162

f

169

sfz sfz *ff*

177

ff *spp*

183

sfz *sfz* *sfz* *sfz*

15. Queen Harmony

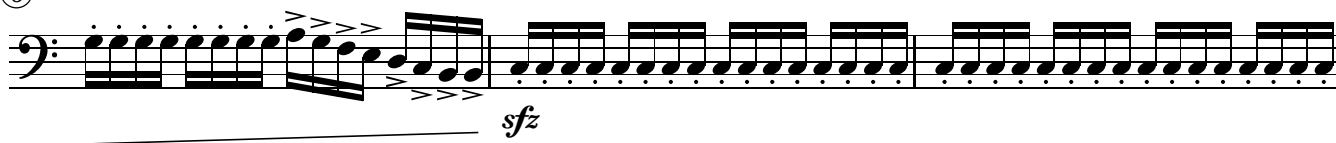
① **Maestoso** ♩ = 60



③



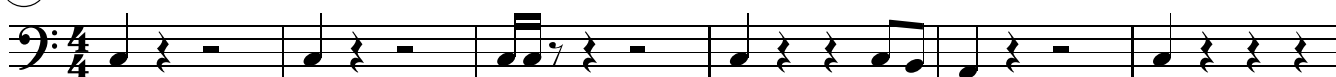
⑥



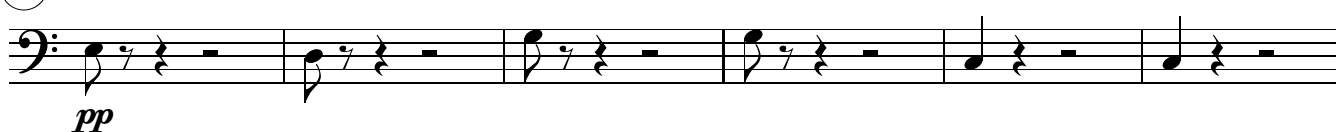
⑨



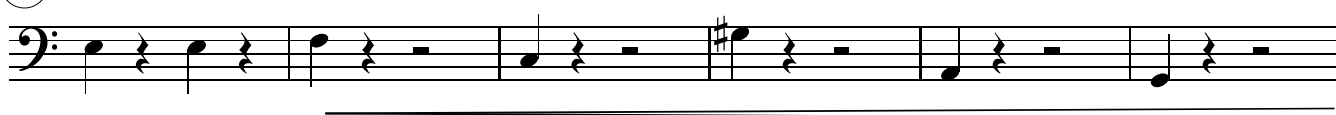
⑭ **Maestoso, Più mosso** ♩ = 80



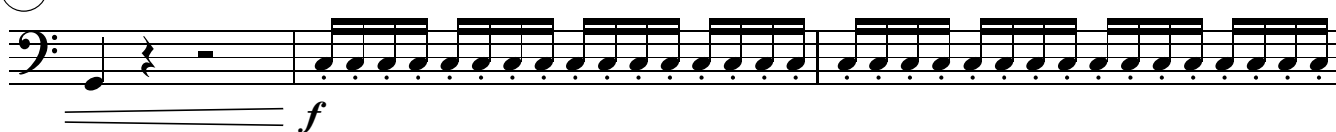
⑳



㉔



㉓ **Tempo primo** ♩ = 60



㉕



Electric Bass

Electric Bass

38



41



46



51



56



58

