

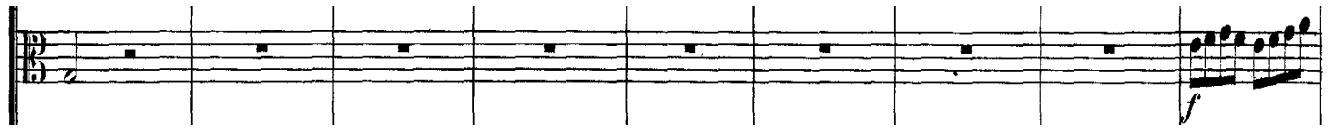
Viola Concerto for Harp and Flute in C Major

W.A.Mozart

Viola.



8



17



27



39



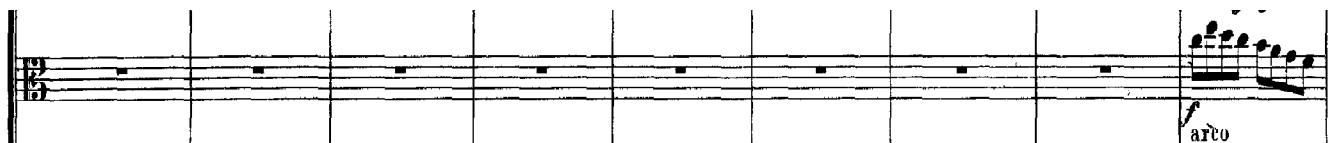
48



59



68



77

Musical staff for measure 77, showing a melodic line starting with a sixteenth-note run.

86

Musical staff for measure 86, showing a rest.

95

Musical staff for measure 95, showing a melodic line starting with a rest.

104

Musical staff for measure 104, showing a melodic line with dynamic markings *f* and *p*.

113

Musical staff for measure 113, showing a melodic line with dynamic marking *p*.

123

Musical staff for measure 123, showing a melodic line.

133

Musical staff for measure 133, showing a melodic line with dynamic marking *pizz.*

143

Musical staff for measure 143, showing a melodic line.

151

Musical staff for measure 151, showing a melodic line with dynamic markings *arco*, *fp*, and *arco*.

160

Musical notation for measure 160, featuring a treble and bass clef. The notation includes a melodic line in the treble clef and a bass line in the bass clef. A 'pizz.' (pizzicato) instruction is present above the treble clef.

169

Musical notation for measure 169, featuring a treble and bass clef. The notation includes a melodic line in the treble clef and a bass line in the bass clef. An 'arco' instruction is present above the treble clef, and a 'p' (piano) instruction is present below the bass clef.

178

Musical notation for measure 178, featuring a treble and bass clef. The notation includes a melodic line in the treble clef and a bass line in the bass clef.

187

Musical notation for measure 187, featuring a treble and bass clef. The notation includes a melodic line in the treble clef and a bass line in the bass clef. A 'f' (forte) instruction is present below the bass clef.

196

Musical notation for measure 196, featuring a treble and bass clef. The notation includes a melodic line in the treble clef and a bass line in the bass clef.

205

Musical notation for measure 205, featuring a treble and bass clef. The notation includes a melodic line in the treble clef and a bass line in the bass clef. A 'r' (ritardando) instruction is present above the treble clef.

214

Musical notation for measure 214, featuring a treble and bass clef. The notation includes a melodic line in the treble clef and a bass line in the bass clef.

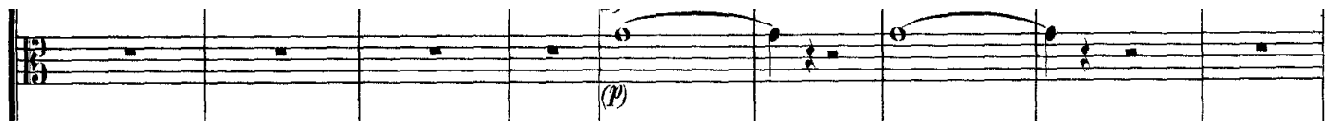
224

Musical notation for measure 224, featuring a treble and bass clef. The notation includes a melodic line in the treble clef and a bass line in the bass clef.

233

Musical notation for measure 233, featuring a treble and bass clef. The notation includes a melodic line in the treble clef and a bass line in the bass clef.

242



251



260



269



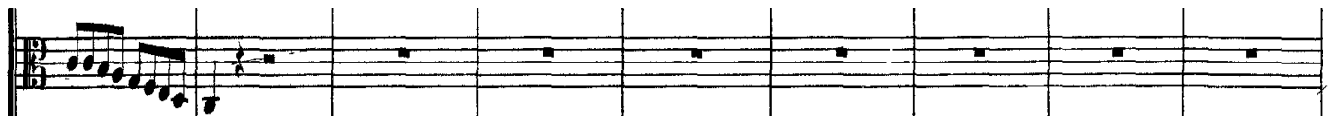
278



288



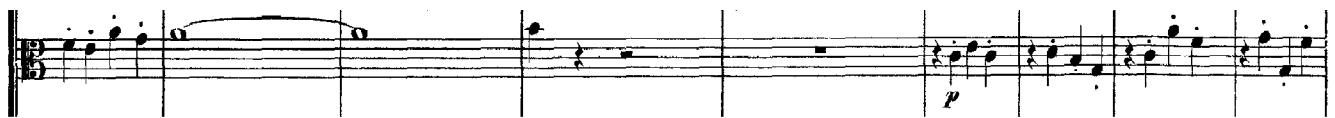
298



307



317



326



336



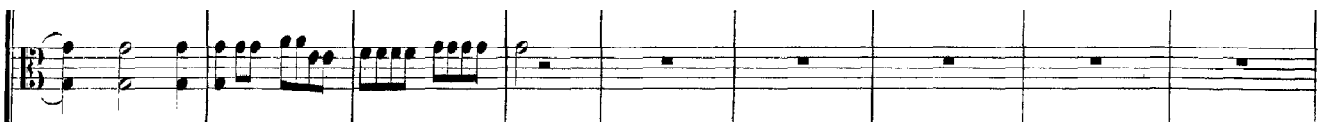
345



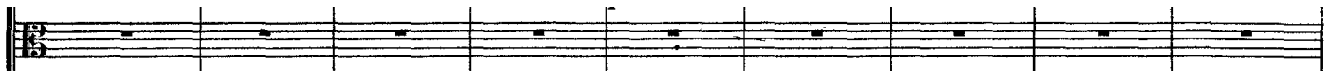
354



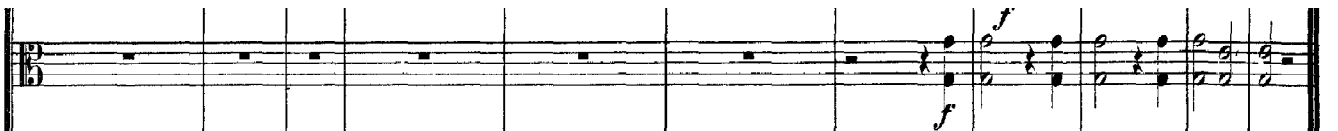
364



373



382



392

